



045 932 8196



1, Seller Street, Maclear, 5480



086 216 8784



kwaneles@elundini.gov.a

Dear Sir / Madam

REQUEST FOR FORMAL WRITTEN PRICE QUOTATIONS

Kindly furnish me with a written quotation for the supply of materials as detailed in the enclosed list.

The quotation must be submitted on the letterhead of your business **must** be deposited in the tender box situated in 1 Seller Street Maclear, Finance Department, Cashier Reception area before 12h00 on the **23 February 2018**. For **queries** please email to at kwaneles@elundini.gov.za or faxed to 086 216 8784

For Technical Queries: Ms B Mashologu-Dlodlo

Tel: 045 932 8113

For Supply Chain Queries: Mr K Sobekwa

Tel: 045 932 8198

SUPPLY AND DELIVERY OF PARK-HOME - ELM-2/029/2017-2018

The following mandatory documents must be submitted with the quotation and failure to submit will lead to the bids being declared non-responsive:

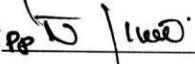
- Price(s) quoted must be valid for at least thirty (30) days from date of your offer.
- Price(s) quoted must be firm and must be inclusive of VAT.
- Valid Tax Clearance Certificate OR Tax Compliance status documents with PIN from SARS.
- Proof of registration with Web Central Supplier Database (A bidder must attach CSD registration report with Supplier No. and Unique Code)
- Original B-BBEE Certificate or a certified copy thereof (Joint venture, consortium or trust must submit a consolidated certificate) Failure to submit this certificate will lead into not getting points for B-BBEE Level) or Sworn Affidavit confirming BBBEE Level. Only certified DTI format sworn Affidavit will be considered (Obtainable on ELM website www.elundini.gov.za)
- Certified copies of Company Registration certificate and IDs.
- Completed MBD 4, MBD 6.1, MBD 8 and MBD 9 (downloadable on the website and found at Supply Chain Office).
- A statement of Municipal Account that is not older than three months or Lease Agreement OR Affidavit from SAPS stating that the bidder is not obliged to pay municipal rates OR a letter from a ward councillor.
- Joint Venture must also attach the JV agreement, original or certified copy of consolidated BBBEE certificate and the letter of signatory.

NB: No quotations will be considered from persons in the service of the state¹

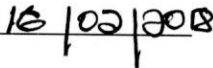
BIDDERS SHOULD TAKE NOTE OF THE FOLLOWING BID CONDITIONS:

- The Elundini Local Municipality Supply Chain Management Policy will apply;
- The Elundini Local Municipality does not bind itself to accept the lowest bid or any other bid and reserves the right to accept the whole or part of the bid;
- Bids which are late, incomplete, unsigned, faxed or sent electronically will not be accepted;
- Bids submitted are to hold good for a period of 30 days;
- **Bidders will be required to register as a supplier/service provider on the ELM's Supplier/Service Provider Database, if not already registered**
- The latest General Conditions of Contract and any Special Conditions of Contract will apply.
- Failure to comply with these conditions may invalidate your offer.
- Upon submission of a bid/quote the bidder automatically grants confirmation that SARS may, on ongoing basis during the contract term the bidder's tax compliance status to the municipality.

SIGNATURE



DATE



SPECIFICATION FOR PARK-HOME

PARK HOME
OPEN PLAN (12 X 3M)



INSULATION

40mm polystyrene insulation with Chromadek cladding internally and externally.

CEILING

40mm white Chromadek insulated panels.

WINDOWS

4 x large aluminium windows (900 x 1200) with aluminium burglar guards and vertical blinds.

DOORS

2 x external Chromadek doors (840 x 2040).

ELECTRICS

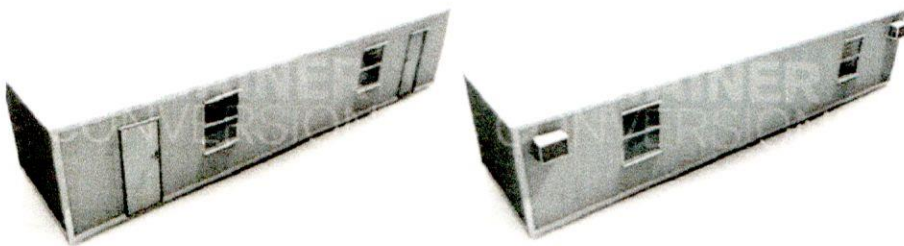
Distribution board, earth leakage, 4 x 15 amp plug points, 4 x single fluorescent lights, 2 x dedicated air conditioner plug points.

FLOORING

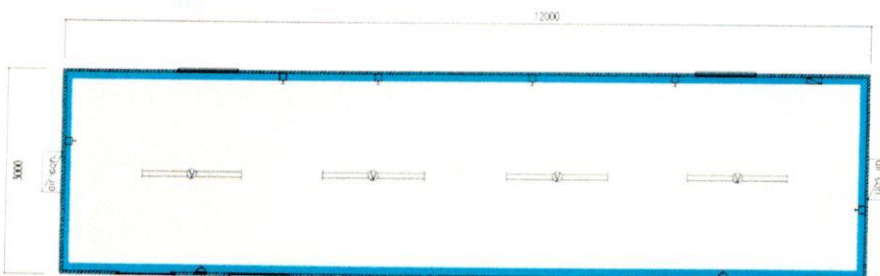
Marley industrial flooring.

AIRCON

2 x 12000 btu heating and cooling airconditioners.



FLOOR PLAN



NOTE
All walls 40mm
thick insulation.

EVALUATION CRITERIA

The 80/ 20 preferential procurement point system will be applied as the project is estimated to be more than R30, 000.00

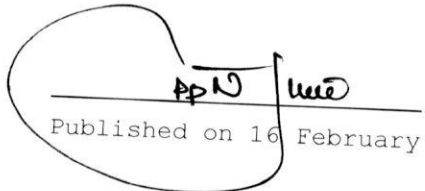
- Price - 80 points
- B-BEE status level of Contribution - 20 points

BBBEE Points Breakdown:

LEVEL	POINTS AWARDED
1	20
2	18
3	14
4	12
5	8
6	6
7	4
8	2
Non-compliant	0

DELIVERY ADDRESS:

Elundini Local Municipality
No.1 Seller Street,
Maclear
5480


Published on 16 February 2018